

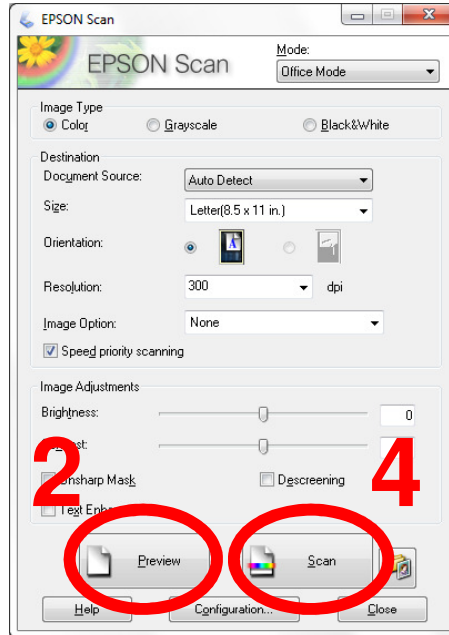
# Scan a Picture or Image

1. On the desktop, click the Scan a Picture icon

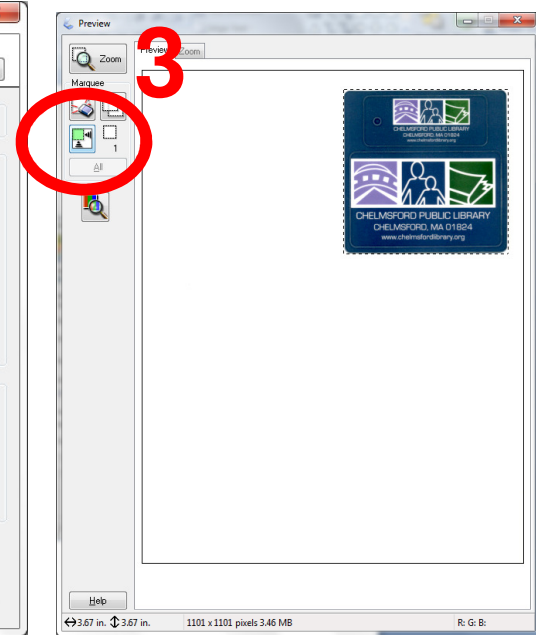


1

2. In the EPSON Scan window, click the Preview button

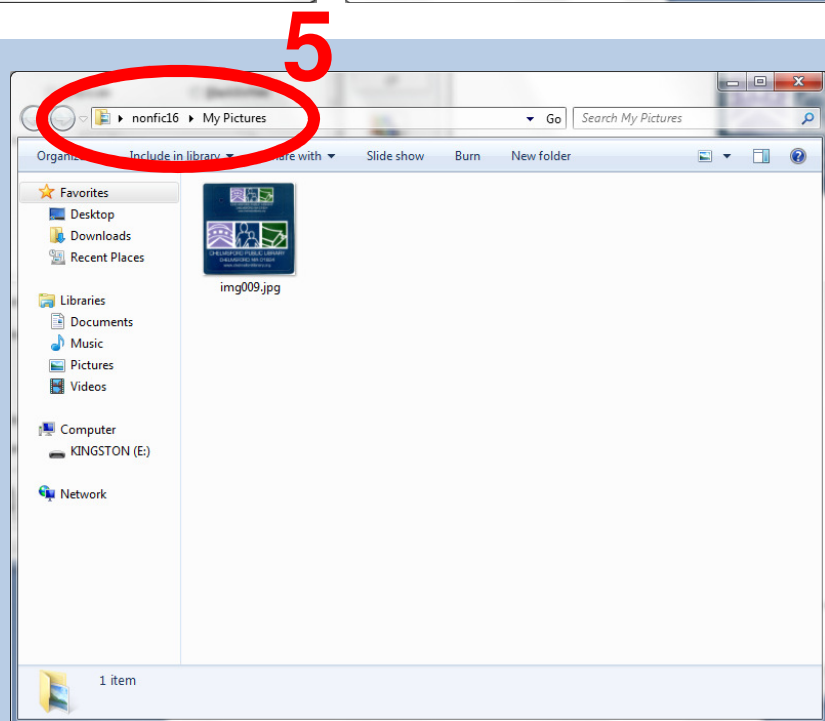


3. Next in the Preview Window, click the button with the green square (to select just your image)



4. Click the Scan button to begin scanning

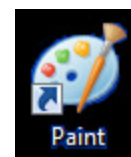
5. Your scan is automatically saved to the My Pictures folder. You can right-click to rename the file, or double-click to view it



To send from email, open your email account and browse to My Pictures to attach your file

Or, you can print the file or transfer it to a flash drive

6. You can open your file in Paint if you'd like to rotate, resize, or crop it



6