

# Free WiFi spot Wireless Access

For Windows Laptops

**NOTE:** Laptops vary, so these guidelines may be slightly different from your computer

## To Connect Our Wireless Network:

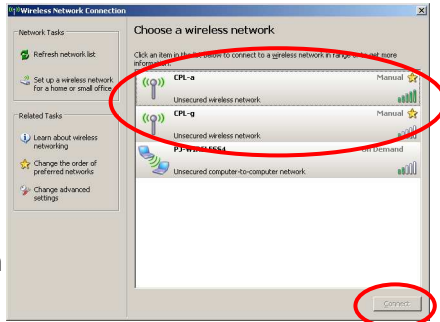
Look for the Wi-Fi icon in the System Tray, by the clock



Click on the icon to View Available Networks (or click to Open Wireless Connection)



Search for or refresh the Network List. Select **CPL-a** or **CPL-g**, and then click the Connect button



Your computer should then connect to the Library's wireless network. If you choose to save this network, your computer will connect automatically on future visits.



25 Boston Road  
Chelmsford, MA 01824  
978-256-5521  
www.chelmsfordlibrary.org  
askus@mvlc.org

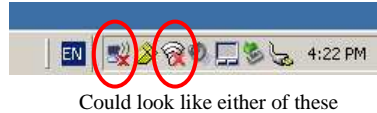
# Free WiFi spot Wireless Access

For Windows Laptops

**NOTE:** Laptops vary, so these guidelines may be slightly different from your computer

## To Connect Our Wireless Network:

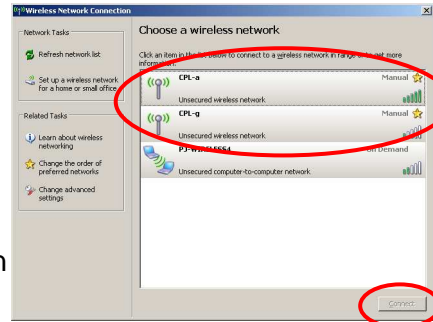
Look for the Wi-Fi icon in the System Tray, by the clock



Click on the icon to View Available Networks (or click to Open Wireless Connection)



Search for or refresh the Network List. Select **CPL-a** or **CPL-g**, and then click the Connect button



Your computer should then connect to the Library's wireless network. If you choose to save this network, your computer will connect automatically on future visits.



25 Boston Road  
Chelmsford, MA 01824  
978-256-5521  
www.chelmsfordlibrary.org  
askus@mvlc.org

# Free WiFi spot Wireless Access

For Windows Laptops

**NOTE:** Laptops vary, so these guidelines may be slightly different from your computer

## To Connect Our Wireless Network:

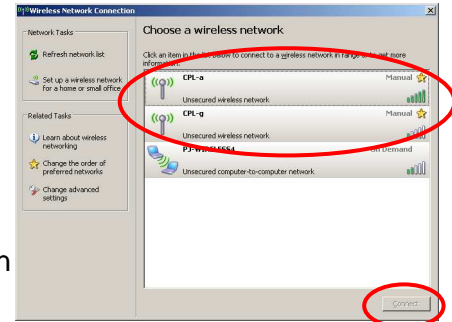
Look for the Wi-Fi icon in the System Tray, by the clock



Click on the icon to View Available Networks (or click to Open Wireless Connection)



Search for or refresh the Network List. Select **CPL-a** or **CPL-g**, and then click the Connect button



Your computer should then connect to the Library's wireless network. If you choose to save this network, your computer will connect automatically on future visits.



25 Boston Road  
Chelmsford, MA 01824  
978-256-5521  
www.chelmsfordlibrary.org  
askus@mvlc.org

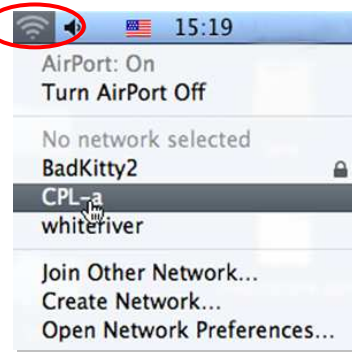
# Free **WiFi** spot **Wireless Access**

For Mac Laptops

**NOTE:** Laptops vary, so these guidelines may be slightly different from your computer

## To Connect Our Wireless Network:

Look for the Wi-Fi icon in the upper right corner, by the clock and the volume control.



Click the icon and select **CPL-a** or **CPL-g** from the dropdown menu.

Your laptop may automatically connect to another network, but you can just select ours.

Your computer should connect to the library's wireless network. Depending on your settings, this network may automatically connect the next time you visit.

**NOTE:** If your Wi-Fi icon is blank with no grey or black bars, you can select "Turn AirPort On" from the menu.



### Please Keep In Mind:

- Our network is not secure, and any information you send could be intercepted
- The library assumes no responsibility for your computer or data while connected to our network
- If you can still not connect after following these steps, please see the Library's Network Administrator for technical assistance

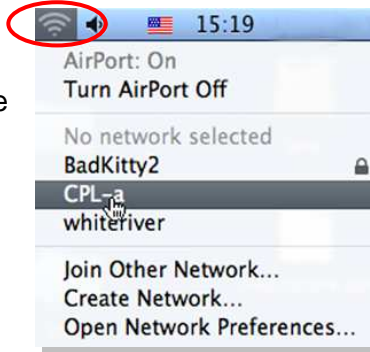
# Free **WiFi** spot **Wireless Access**

For Mac Laptops

**NOTE:** Laptops vary, so these guidelines may be slightly different from your computer

## To Connect Our Wireless Network:

Look for the Wi-Fi icon in the upper right corner, by the clock and the volume control.



Click the icon and select **CPL-a** or **CPL-g** from the dropdown menu.

Your laptop may automatically connect to another network, but you can just select ours.

Your computer should connect to the library's wireless network. Depending on your settings, this network may automatically connect the next time you visit.

**NOTE:** If your Wi-Fi icon is blank with no grey or black bars, you can select "Turn AirPort On" from the menu.



### Please Keep In Mind:

- Our network is not secure, and any information you send could be intercepted
- The library assumes no responsibility for your computer or data while connected to our network
- If you can still not connect after following these steps, please see the Library's Network Administrator for technical assistance

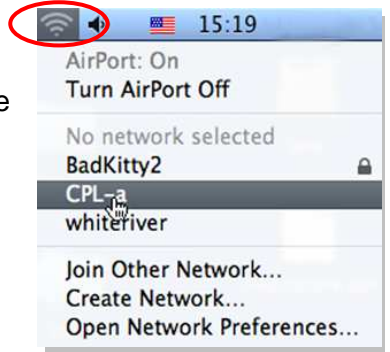
# Free **WiFi** spot **Wireless Access**

For Mac Laptops

**NOTE:** Laptops vary, so these guidelines may be slightly different from your computer

## To Connect Our Wireless Network:

Look for the Wi-Fi icon in the upper right corner, by the clock and the volume control.



Click the icon and select **CPL-a** or **CPL-g** from the dropdown menu.

Your laptop may automatically connect to another network, but you can just select ours.

Your computer should connect to the library's wireless network. Depending on your settings, this network may automatically connect the next time you visit.

**NOTE:** If your Wi-Fi icon is blank with no grey or black bars, you can select "Turn AirPort On" from the menu.



### Please Keep In Mind:

- Our network is not secure, and any information you send could be intercepted
- The library assumes no responsibility for your computer or data while connected to our network
- If you can still not connect after following these steps, please see the Library's Network Administrator for technical assistance